

Establishing a COVID-19 Assessment & Admissions Unit

The “Hospital within a
Hospital”

Acute Sector Partnership:



Covid-19 Assessment & Admissions Unit | **Ambition**



e News > UK & World News > Health

Coronavirus in Tayside: first confirmed case of deadly illness caused by COVID-19 in Scotland

First Minister Nicola Sturgeon released a statement saying: "Scotland is well-prepared for a significant outbreak of coronavirus but there is currently no treatment or vaccine."

Acute Sector Partnership:



- **Deliver separate streams of assessment** for non Covid-19 and Covid-19 possible patients.
- **Establish a Covid-19 Assessment Unit** 'hospital within a hospital' with dedicated front door. Aim to initially manage all hospital Covid-19 activity apart from those requiring immediate resuscitation – ED isolation area
- **Consultant Connect were able, at short notice, to provide a prof-to-prof Covid-19 Advice Line** – a critical component enabling access to Ambulance crews and regional GPs. Call recordings and data collection.
- **Engage with partners** – SAS, NHS24, GPs
- **Move at pace.** We had 3 days – from organisation approval on 11th March 2020 to opening!

Thursday 12th March 2020

- East Block Decant: circa 50 staff out of 18 offices, a reception area and full clinic and Pulmonary Function Lab
- Consultant Rota: Respiratory and ID providing 24/7 resident consultant cover for a separate COVID “take” including assessment, isolation rooms, HDU and positive cohort wards
- Ward 17: Ward emptied and stocked and available for overspill from Ward 42
- Local COVID-19 Testing in Virology Lab
- **MAJOR INCIDENT!**

Friday 13th March 2020

- East Block Assessment Unit: repurposing of space to provide clinical assessment function
- Consultant Connect: rapid establishment of dedicated COVID-19 professional advice line
- “Go Live” guidance to NHST receiving areas,
- NHS 24, SAS and Primary Care
- MTU as COVID +ve HDU
- 24 hour nursing roster
- Ward 18 Decanted

NHS Tayside COVID Assessment Unit opens at 1700. 11 referrals overnight. No unannounced COVID possible presentations in any other area

Covid-19 Assessment & Admissions Unit | Outcome & Value

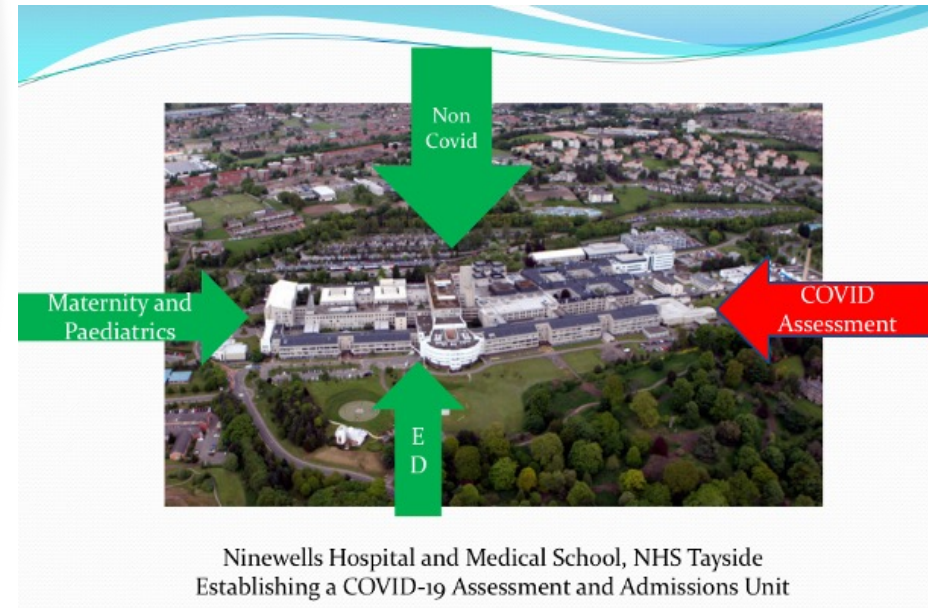
- ✓ 7,529 calls to the COVID assessment line
- ✓ **30% of patients were NOT admitted to hospital**
- ✓ 30% patients managed in ambulatory fashion and discharged after initial assessment
- ✓ Consultant Connect Prof-to-Prof call enabled enhanced preparation and identification of patients for admission vs ambulatory assessment.

Acute Sector Partnership:



Peak 1 – 6th April 2020
105 occupied COVID beds

Peak 2 – 13 January 2021
177 occupied beds



Covid-19 Assessment & Admissions Unit | Outcome & Value

PERFORMANCE UPDATE - 23
JANUARY 2021

NHS TAYSIDE

Tayside Weekly ED Performance - 94.7%

Pre Hospital Decision Support prevented hospital attendance in 31% of cases across Covid and Emergency Departments

The Flow Navigation Centre converted 9% of unscheduled referrals to scheduled attendances

32% of patients seen at the Covid Assessment Unit did not require admission to hospital

NHS Tayside clinicians handled 781 Professional to Professional calls this week

Patient experience

COVID-19 patients access to

- ✓ Front loaded senior decision making
- ✓ Ambulatory pathways
- ✓ Alternatives to admission

Ambulance experience

- ✓ No offload waits

Mid-winter unscheduled care performance

- ✓ Average ED 4hr performance – 95.2%

Compared to:

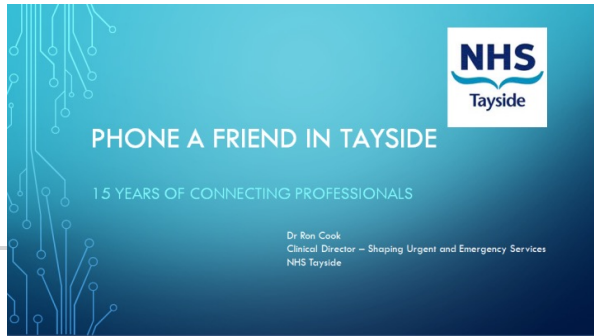
NHS Scotland – 88.2%

Other Mainland Boards – 84.2%

Acute Sector Partnership:



Covid-19 Assessment & Admissions Unit | Spread & Involvement



Acute Sector Partnership:



- **Rapid expansion in Prof-to-Prof enhancing and extending a multi-front door response**
 - Emergency Medicine
 - Acute Medicine
 - COVID-19 Assessment
 - Stroke
 - Paediatrics
 - Acute Surgery
 - Medicine for the Elderly
 - Diabetes
- **Multi-agency ‘Masterclass’ session**
 - Outcome reporting
 - Staff and patient feedback
 - Decision making education
- **Involvement in Government SLWG** to promote and support Prof-to-Prof services across Scotland
- **National Presentation** to Scottish Government Redesign of Urgent Care Implementation workshop